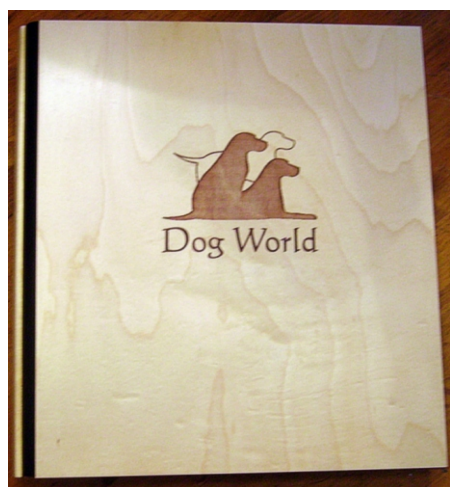


# Burford Albums

by Felcor Inc.



**ENGRAVED PHOTO FRAME** -- Red alder or black photo frame can be personalized for anyone or any occasion, and can be engraved either vertically or horizontally. Available for 4x6; 5x7; 8x10



## LARGE PORTFOLIO (12.5"L x 10.5"W)

Available in cherry, maple and walnut to accommodate up to 8.5 x 11 standard sheet size in page protectors. All customization options available as per photo album below.



**JOURNAL** (9"L x 5.5"W) -- Custom engraved journal, available in maple (shown) and cherry. Includes removable/replaceable 5x8 standard spiral bound notebook.

Also available - custom covers for **Agility Record Book**



**PHOTO ALBUM** -- Photo album (10"L x 9"W) in maple or cherry ...includes 12 4x6 fold-out pages for 96 photo capacity...will hold up to 12 additional pages...options include wedding invitations, birth announcements, spine engraving, etc. Sample photo album covers celebrate a new arrival...front cover features custom photo engraving; inside cover birth announcement.



## NOTEPAD -- (9"L x 6"W)

Note pad holder; available in cherry, maple and walnut. Includes 5x8 standard ruled note pad. Maple pen optional.



**CUSTOM COASTER** -- Custom coasters (4\"L x 4\"W) in maple (shown) or cherry feature photo engraving and personalization, logo, or text.



**CUSTOM ENGRAVED FRAMED TILE** -- Custom engraved maple tile framed perfectly in our red alder frame. Available in 4x6; 5x7; 8x10



**CUSTOM ORNAMENT** -- Custom ornament (4\" diameter) in maple (shown) or cherry features photo engraving and personalization, logo, or text.



**BUSINESS CARD HOLDER** -- Maple arched card holder (4 1/8\" x 2 5/8\" x 9/16). Can be personalized with logos, designs and/or names.

### WINE CADDY

Wine caddy holds a full 750 ml bottle of wine in a balanced horizontal position and also serves as a coaster once the bottle has been opened. Made from solid North American hardwoods -- available in maple, walnut, burgundy and black finish. Custom laser engraving is available. Cost: \$20.00

#### To Use:

1. Hold wine caddy on a flat surface, straight edge down.
2. Place neck of bottle into wine caddy and adjust position until wine caddy is balanced on its base.



## JEWELRY

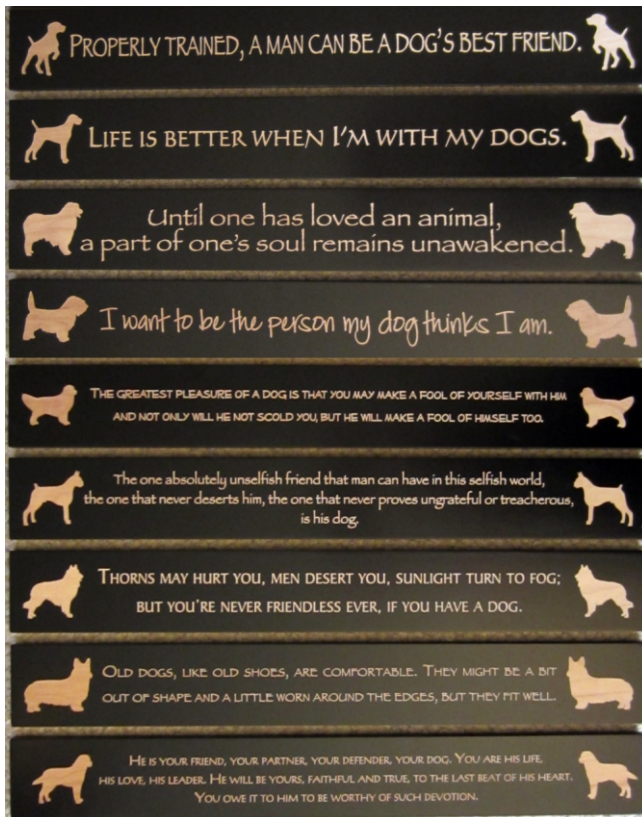
3.

Our jewelry is made from maple wood that is hand painted with lacquer, laser engraved, filled with silver color fill, and then finished with several coats of clear pure lacquer, resulting in a glass-like finish. The tiles are mounted in silver plate bezels; pendants include a 17.5" leather cord w/lobster clasp. Square & round lever back earrings are sterling silver. Create your own one-of-a-kind design using any of our graphic images or by providing your own design ideas. All jewelry items are available in black, blue, red & green and come in an organza pouch.



## DECORATIVE SIGNS

Our whimsical signs are made from maple wood that is hand painted with black lacquer and engraved with quotes about your favorite topic...dogs, skiing, golf or life in general. We can personalize it with any dog breed or other graphic image and/or saying of your choice. Small signs measure 3" tall x 7.5" wide x 1/2" thick; large signs measure 3" tall x 23.5" wide x 1/2" thick; both come with ready-to-hang sawtooth hangars.





**CRATE SIGNS w/BREED** - 3"L x 5"W

\*All AKC breeds are available



**ZIPPER PULLS** - 1" x 1"

\*All AKC breeds are available



**KEY CHAINS w/BREED** - \*All AKC breeds are available

Round - 2" diameter    Rectangular - 1.25"L x 2.75"W



**DECORATIVE WALL TILES** - 6" X 6"

\*All AKC breeds available

### Welcome Collection

(All AKC breeds are available for placement in sign)

### SIGNATURE SIGNS

by Felcor Inc.



**WELCOME - SUN w/BREED** -  
10.25"L x 9"W



**WELCOME - WINDOW w/BREED** -  
10.25"L x 9"W



**WELCOME - TREE w/BREED** -  
10.25"L x 9"W

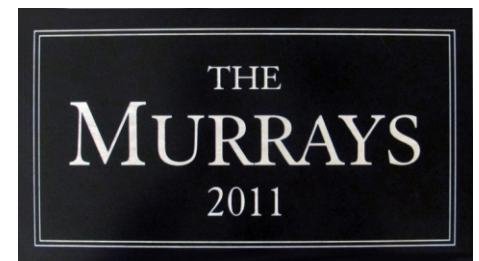
### Family / Kennel Name Collection



**ORNATE w/OVAL** - 9"L x 16"W



**ARTS&CRAFTS w/BORDER** - 9"L x 16"W



**TRADITIONAL w/BORDER** - 9"L x 16"W

# Coaster Art

by Felcor Inc.

Our maple coasters are hand-crafted in our Western New York studio where they are sealed, sanded and then coated with a hardened, environmentally-friendly black lacquer finish. The graphic design is then laser engraved through to the maple base, thereby providing a lovely contrast between the black lacquer and light maple wood. A final coat of clear lacquer is then applied to seal the product completely. Coasters are individually packed in a black paper sleeve.

## Wild Animals Collection



WIL-01



WIL-02



WIL-03



WIL-04



WIL-05

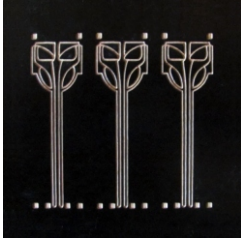


WIL-06

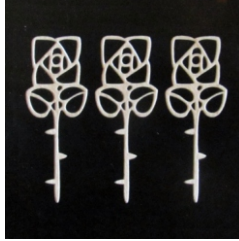
## Arts & Crafts Collection



ART-01



ART-02



ART-03



ART-04



ART-05



ART-06

## Buffalo Collection



BUF-01



BUF-02



BUF-03



BUF-04



BUF-05

## Bug Collection



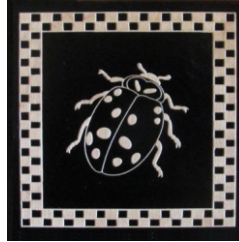
BUG-01



BUG-02



BUG-03



BUG-04



ASI-01



ASI-02

## Asian Collection

## Butterfly Collection



BUT-01



BUT-02



BUT-03



BUT-04



BUT-05

## Celtic Collection

6.



CEL-01



CEL-02



CEL-03



CEL-04



CEL-05



CEL-06

## Dog Breed Silhouettes (all AKC breeds available)



DOG-01



DOG-02



DOG-03



DOG-04



DOG-05



DOG-06

## Grapes Collection



GRA-01



GRA-02



GRA-03



GRA-04

## Monograms



MON-01

## Love My Dog Collection (all AKC breeds available)



LMD-01



LMD-02



LMD-03



LMD-04



MON-02

## Military Collection



MIL-01



MIL-02



MIL-03



MIL-04



MON-03

## Paisley Collection



PAI-01



PAI-02



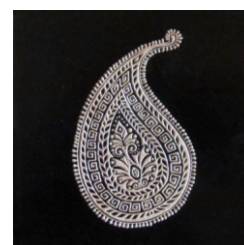
PAI-03



PAI-04



PAI-05



PAI-06

## Snowflake Collection

7.



SNO-01



SNO-02



SNO-03



SNO-04



SNO-05



SNO-06



SNO-07



SNO-08



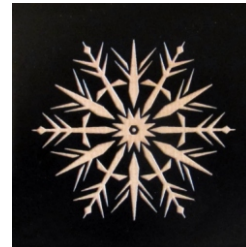
SNO-09



SNO-10



SNO-11



SNO-12

## Southwest Collection



SOU-01



SOU-02



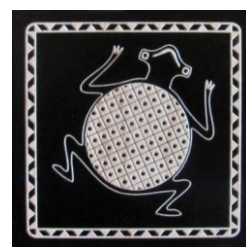
SOU-03



SOU-04



SOU-05



SOU-06

## Kokopelli Dancer Collection (all 6 designs available in regular or reversed engraving)



KOK-01



KOK-02



KOK-03



KOK-04



KOK-05



KOK-06

## Wreath Collection



WRE-01



WRE-02



WRE-03



WRE-04



WRE-05



WRE-06

## Tranquil Garden Collection



TRA-01



TRA-02



TRA-03



TRA-04



TRA-05



TRA-06

**BURFORD ALBUMS****by Felcor Inc.****PRICING****Page 1****PHOTO FRAME -- natural or black** (engraved vertically or horizontally) --**4x6 - \$20; 5x7 - \$25; 8x10 - \$35****PORTFOLIO** -- holds an 8.5 x 11 standard sheet size in page protectors -- **\$90****JOURNAL** -- **\$50** (includes 5x8 spiral-bound notebook)**AGILITY RECORD BOOK** -- **\$35** (covers only)**PHOTO ALBUM** -- **\$80** (includes 12 4x6 fold-out pages; will hold up to 12 extra pages @ \$1/pg)**SMALL PHOTO ALBUM** -- **\$50** (includes 20 4x6 black linen cardstock pages)**NOTEPAD** -- **\$50** (includes 5x8 ruled pad); with maple pen add **\$6****Page 2****CUSTOM PHOTO ENGRAVED COASTER** -- **\$10** (photo can be sent via e-mail in color or b&w at a 300 dpi resolution)**CUSTOM ENGRAVED FRAMED TILE** (engraved vertically or horizontally) --**4x6 - \$35; 5x7 - \$40; 8x10 - \$50****CUSTOM ORNAMENT** -- **\$10****BUSINESS CARD HOLDER** -- **\$10****WINECADDY** -- **\$20****Pages 3, 4, 5 -- COASTER ART** -- all black coasters - **\$5 ea.****Page 6****CRATE SIGNS w/BREED** -- **\$10****ZIPPER PULLS w/BREED** -- **\$3.50****KEY CHAINS - ROUND OR RECTANGULAR** -- **\$8****DECORATIVE 6X6 WALL TILES** - **\$15****WELCOME/COME.SIT.STAY w/BREED SIGNS** -- **\$35**-- Larger size available (12"L x 10.5"W) -- **\$45****FAMILY/KENNEL NAME SIGNS** -- **\$50****Page 7****JEWELRY** -- Pendants - Lg square & round: **\$25 ea.** Sm square & round: **\$22 ea.** Earrings: **\$22 pair**Cuff Bracelets: **\$25** (all jewelry available in black/red/green/blue)**DECORATIVE SIGNS -- SMALL** -- **\$15 ea.** **LARGE** -- **\$25 ea.**

Burford Albums by Felcor Inc.

Bill Salt &amp; Suzanne Holancin

10800 Edies Rd., Springville, NY 14141

tel: 716-592-0060

Wjsfelcor@aol.com www.burfordalbums.com